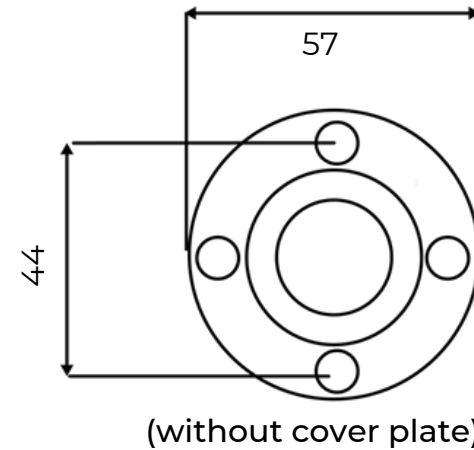


TOWEL RING



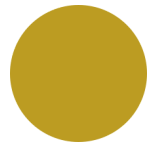
Available Finishes

Brushed
Nickel (PVD)



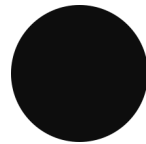
TR-BN

Brushed
Gold (PVD)



TR-BG

Matte Black



TR-MB

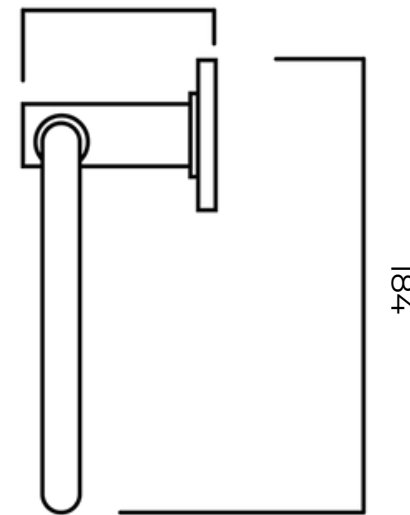
Chrome



TR-C

INSTALLATION NOTES:

Remove cover plate by twisting and pulling back. Screws and wall plugs supplied are for timber or masonry fixings. Use toggle bolts for plaster or cavity walls. (Not provided). There are four fixing points, but two should be adequate. We recommend always using top and bottom fixing points.



SPECIFICATIONS

Fully
concealed
fixings

Secure 4
point fixing
system

