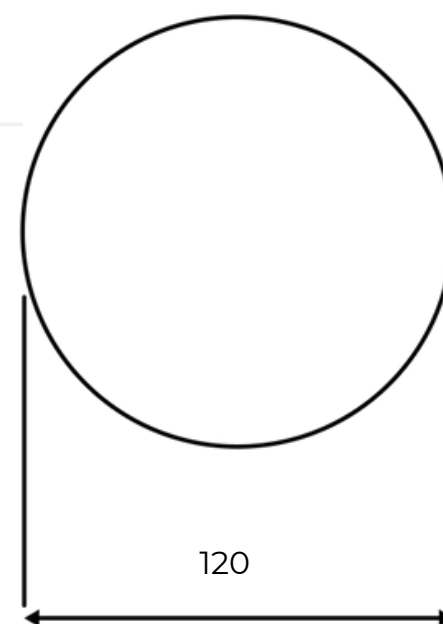


# LARGE DISC HOOK 120MM



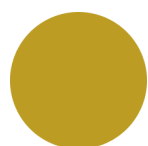
## Available Finishes

Brushed  
Nickel (PVD)



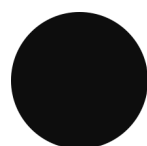
LDH-BN

Brushed  
Gold (PVD)



LDH-BG

Matte Black

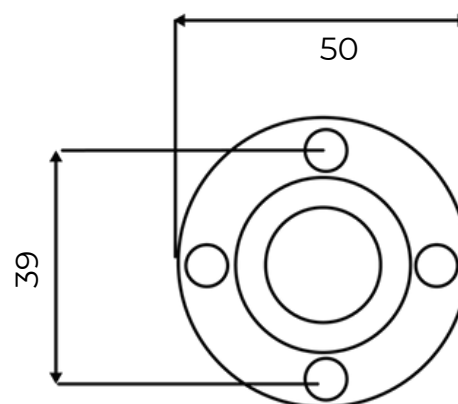


LDH-MB

Chrome

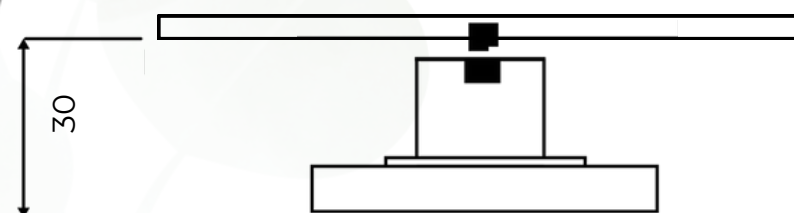
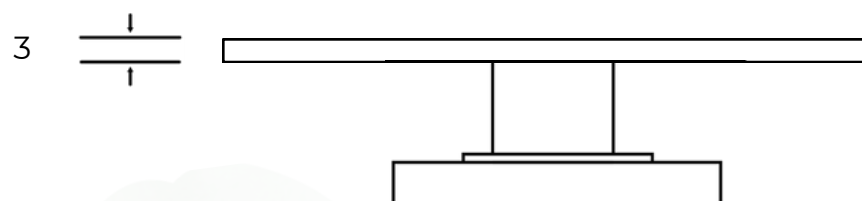


LDH-C



## INSTALLATION NOTES:

Rotate disk anti-clockwise to remove, then remove cover plate by twisting and pulling back. Screws and wall plugs supplied are for timber or masonry fixings. Use toggle bolts for plaster or cavity walls. (Not provided). There are four fixing points, but two should be adequate. We recommend always using top and bottom fixing points.



## SPECIFICATIONS

Fully  
concealed  
fixings

Secure 4  
point fixing  
system

